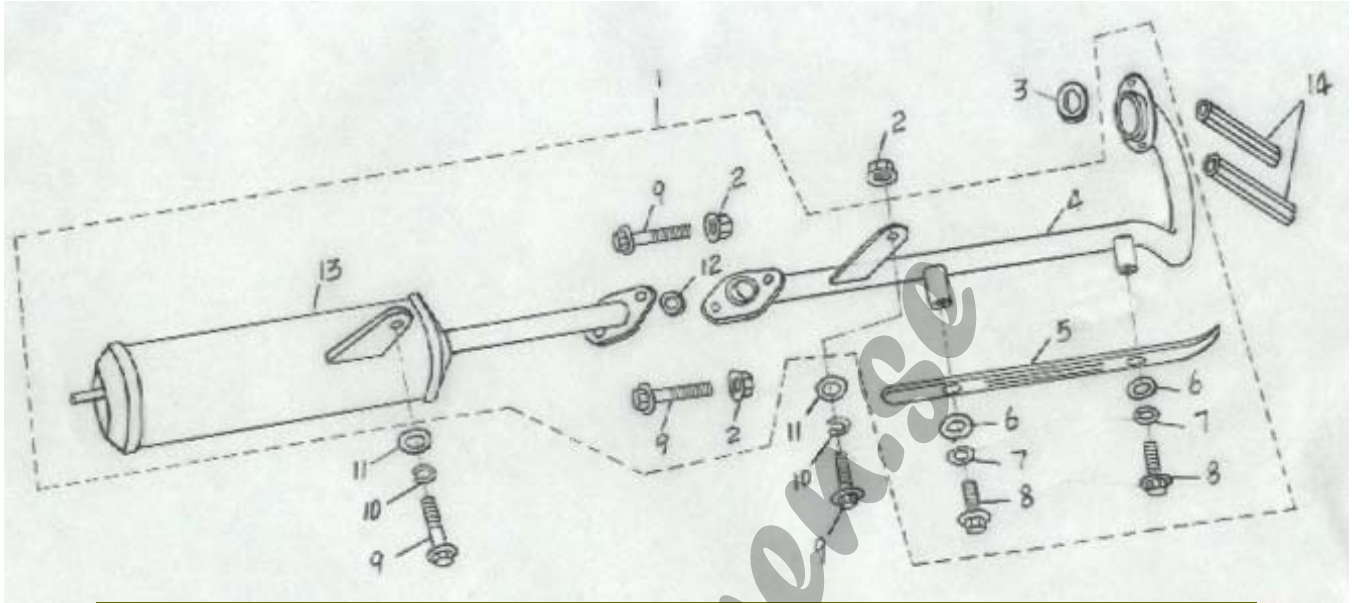
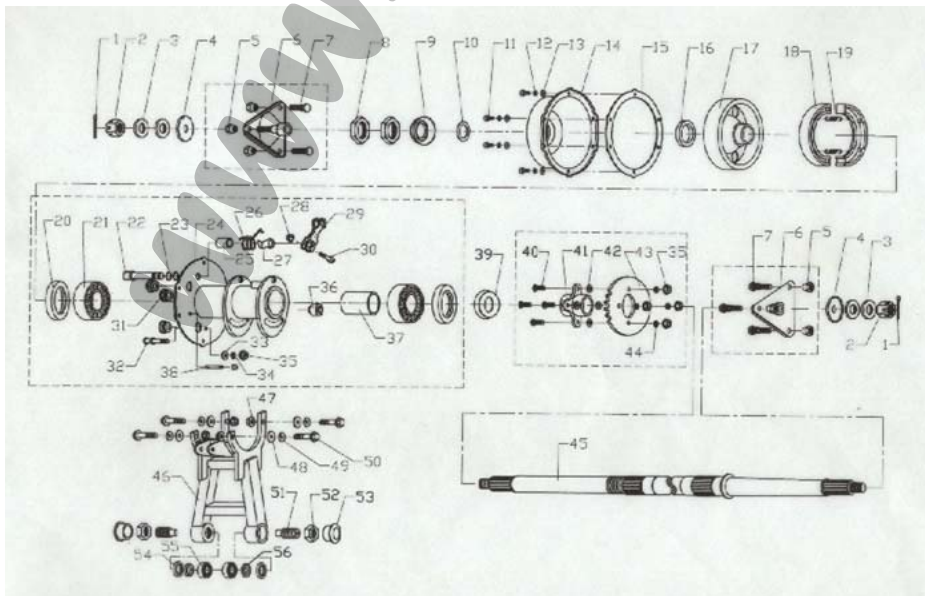


PANDA 100-110

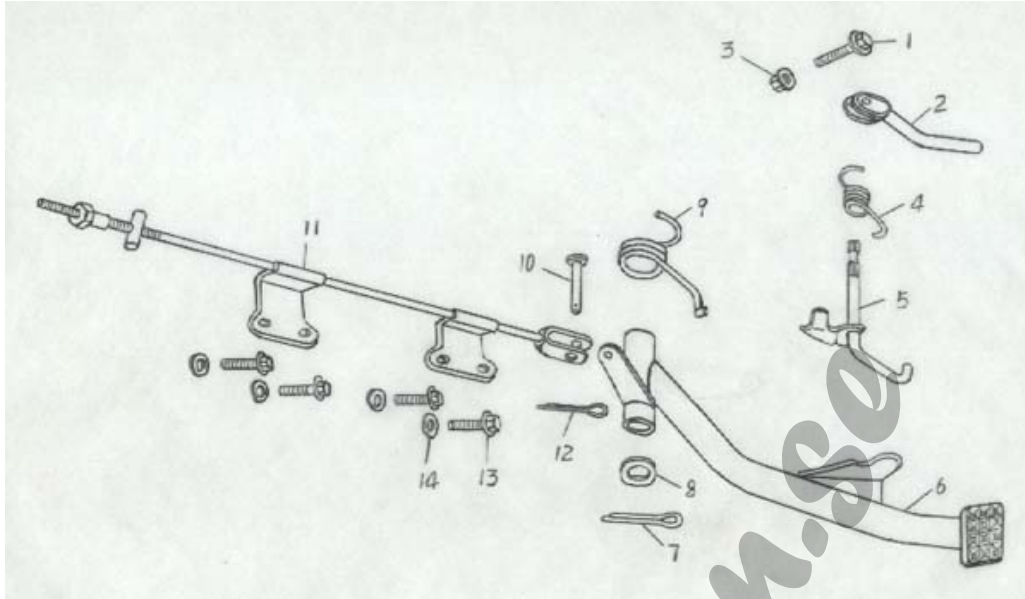


SN	Code Name	Name	Quantity	Remark
1	C100B-1200000	Exhaust pipe assy	1	
2	GB6177-86	Bolt M8	4	
3	C100B-1200020	Seal gasket(一)	2	
4	C100B-1200030	Exhaust pipe	1	
5	C250-8301009	Exhaust pipe dust plate	2	
6	GB97.1-85	Plain washer Φ6xΦ17x1	2	
7	GB93-87	Spring washer Φ6	1	
9	GB5787-86	Bolt M8x25	2	
10	GB97.1-85	Plain washer Φ8xΦ17x1	2	
11	GB93-87	Spring washer Φ8	4	
12	C100B-1200002	Seal gasket(二)	1	
13	C100B-1200010	Muffler assy	1	
14	(C100B-1200021)	Exhaust pipe nutM6xS10xM26	1	

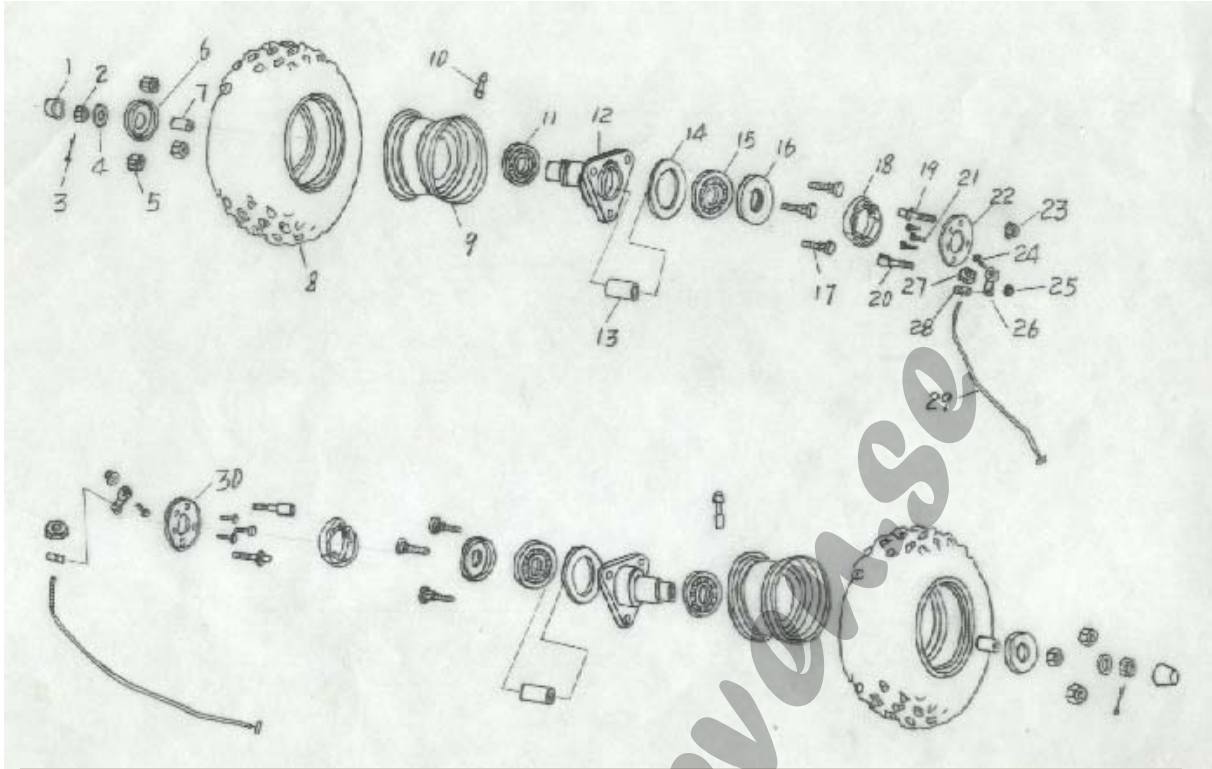


SN	Code Name	Name	Quantity	Remark
----	-----------	------	----------	--------

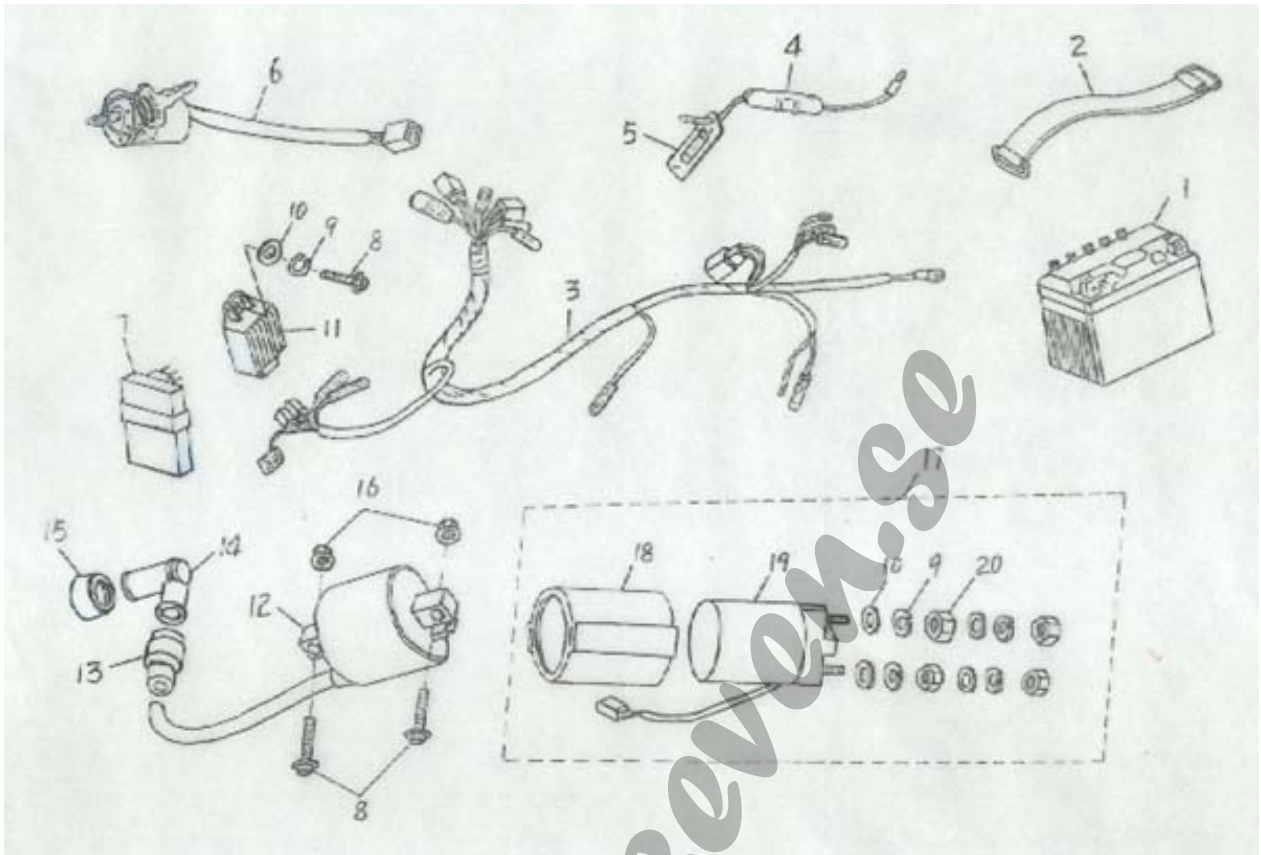
1	C100-2401001	Cotter pin Φ 4X45	2	
2	C100-2401002	Split nut M16x1.5	2	
3	C100-2401003	Plain washer	4	
4	C100-2401004	Rear axle dust cover	2	
5	C100-3104016	Wheel nut M10x1.25	6	
6	C100-3104010	Rear wheel hub	2	
7	C100-3104014	Wheel bolt M10x1.25x25	6	
8	C100-2401005	Nut M28x1.5	2	
9	C100-2401006	Dust cover	1	
10	C100-2401053	Adjusting washer	1	
11	C100-2401039	Bolt M6x10	6	
12	C100B-2401005	Washer Φ 6	6	
13	C100-2401041	Plain washer Φ 6	6	
14	C100-2401008	Brake drum cover	1	
15	C100-2401012	Gasket	1	
16	C100-2401007	Oil seal	1	
17	C100B-2401001	Brake drum	1	
18	C100-2401060	Rear brake shoe assy	2	
19	C100-2401064	Rear brake shoe return spring	2	
20	C100-2401013	Oil seal	2	
21	C100-2401014	Bearing 62/32ZZ	2	
22	C100-2401038	Rear brake camshaft	1	
23	C100-2401047	O-ring	2	
24	C100B-2400130	Body block	1	
25	C100-2401045	Camshaft sleeve	1	
26	C100-2401004	Torsion spring	1	
27	C100B-2401044	Stopper	1	
29	C100-2401035	Rear brake arm	1	
30	C100-2401036	Bolt M6x30	1	
31	C100-2401043	Cap	3	
32	C100-2401051	Rear brake shoe dowel pin	1	
33	GB97.1-85	Plain washer Φ 8	1	
34	GB7245-87	Washer Φ 8	1	
35	C100-2401052	Nut M8	14	
36	C100-2401016	Snubber shift collar	1	
37	C150B-2401004	Sleeve bush	1	
38	C100-2401048	Air pipe	1	
39	C150B-2401003	Dust cover	1	
40	C100-2401022	Plain screw M8	4	
41	C100-2401025	Drive sprocket seat	1	
42	C100-2401019	Drive sprocket adjust plate	4	
43	C100B-2401002	Drive sprocket	1	
44	C100-2401024	Wave washer Φ 8	4	
45	C100B-2401003	Rear axle shaft	1	
46	GB6177-86	Nut M12x1.5	4	
47	C100B-2400600	Swing arm assy	1	
48	GB7245-87	Washer Φ 12	4	
49	GB97.1-85	Plain washer Φ 12	4	
50	GB5787-86	Bolt M12x1.5x35	4	
51	C100B-8301006	Dowel bolt	2	
52	C100B-8301008	Dowel nut M22X1.5	2	
52	C100B-8301008	Dowel nut M22X1.5	2	
53	C250-8301008	Swing arm cover	2	
54	HG4-692-67	Oil seal PD20X35x5	2	
55	GB/T297-94	Roller bearing 30202	2	



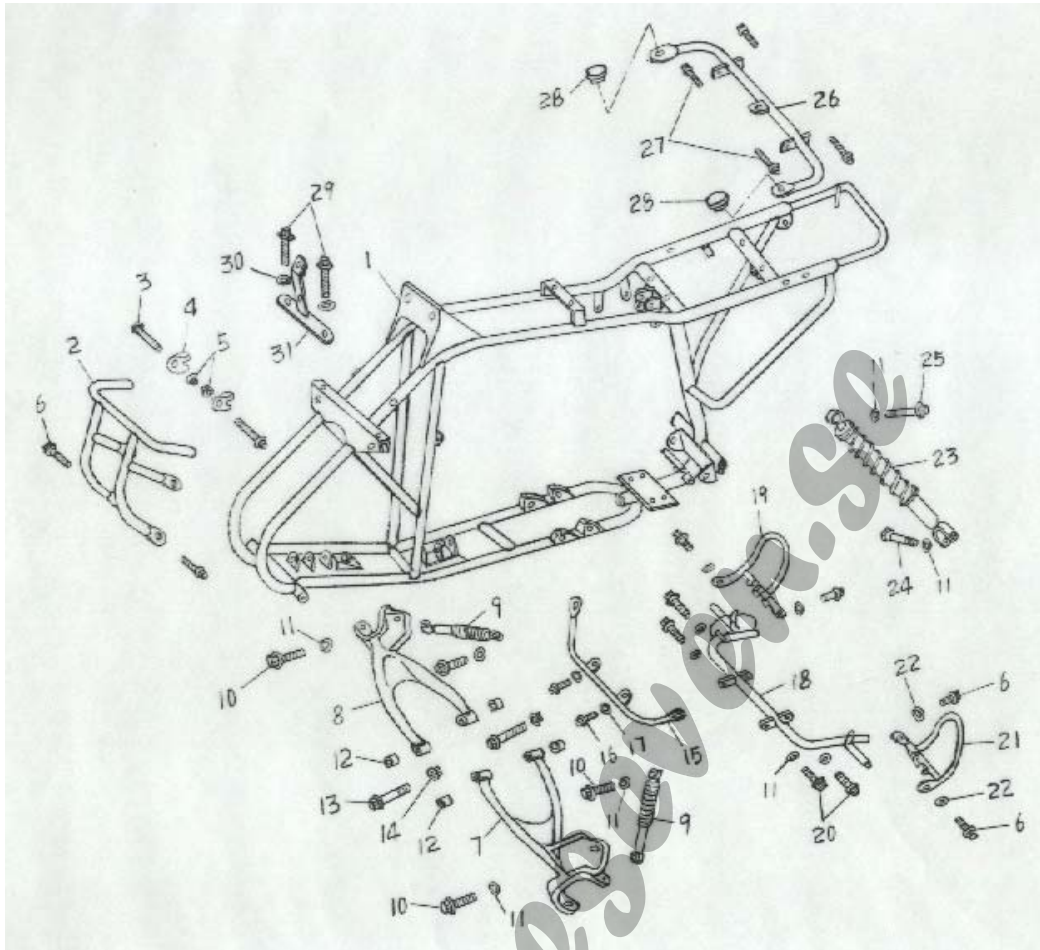
SN	Code Name	Name	Quantity	Remark
1	GB5787-86	Lock pin $\Phi 6 \times 20$	1	
2	C100B-3508110	PARKING BRAKE CONTROL ROD	1	
3	GB6177-86	Split pin $\Phi 3 \times 30$	1	
4	C100B-3508101	TORQUE SPRING-BRAKE ARM	1	
5	C100B-3508120	Brake arm set	1	
6	C100B-2823000	Foot brake lever set	1	
7	GB91-86	Cotter pin $\Phi 2 \times 28$	1	
8	GB97.1-85	Plain washer $\Phi 14$	1	
9	C100B-3503001	Spring-foot brake lever	1	
11	C100B-3504500	BRAKE CABLE	1	
12	GB91-86	Cotter pin $\Phi 1.5 \times 28$	1	
13	GB5787-86	Bolt M6x10	4	
14	GB7245-87	Washer $\Phi 5$	4	



1	C100-3100013	Dust cover	2	
2	C100-2304102	Slotted nut M14x1.5	2	
3	C100-2304101	Split pin $\Phi 3 \times \Phi 40$	2	
4	C100-2304103	Plain washer $\Phi 14 \times \Phi 27 \times 1.5$	2	
5	C100-3100005	Wheel nut M10x1.25	6	
6	C100-3100006	Front wheel oil seal $\Phi 19 \times \Phi 35 \times 5$	2	
7	C100-3100014	Sleeve bush(一) $\Phi 15.4 \times \Phi 20 \times 7$	2	
9	C100-3101010	Wheel rim	2	
10	C100-3101013	Air pipe	2	
11	C100-3100011	Front wheel bearing 60202	2	
12	C100-3100008	Front wheel hub	2	
13	C100-3100009	Sleeve bush(二) $\Phi 17.5 \times \Phi 23.5 \times 12.5$	2	
14	C100-3100001	Seal gasket $\delta=3$	2	
15	C100-3100007	Front wheel bearing 60203	2	
16	C100-3100006	Front wheel oil seal $\Phi 21 \times 40 \times 6$	2	
17	C100-3100003	Wheel bolt M10x1.25x15	2	
18	C100-2500110	Front brake shoe assy	6	
19	C100-2304104	Locating screw	2	
20	C100-2304118	Front brake camshaft	2	
21	C100-2304106	Bolt	6	
22	C100-2304105(L)	Dust cover (L)	1	
23		Nut M8	2	
24	C100-2304119	Bolt M5x28	2	
25	C100-2304121	Nut M5	2	
26	C100-2304107	Front brack arm	2	
27		Nut M6	2	
28		Pin	2	
29	C100B-3504400	Front brake cable	2	
30	C100-2304105(R)	Dust cover (R)	1	
5	C250-8301404	Right lever bracket	1	



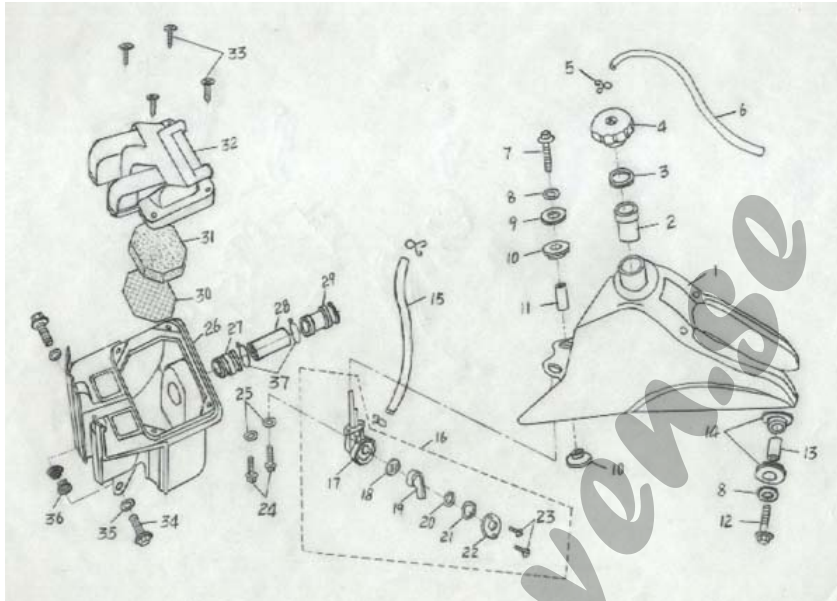
1	C100B-3703000	BATTERY (12V7Ah)	1	
2	(C100B-3703001)	BATTERY RUBBER STRAP	1	
3	C100B-3700000	HARNESS WIRES	1	
4	(C100B-3700011)	CYLINDER FUSE	1	
5	C100B-8301110	IGNITION SWITCH	1	
6	C100B-3704000	C.D.I.	1	
7	GB5787-86	Bolt M6x20	4	
8	GB93-87	Washer Φ6	6	
9	GB97.1-86	Plain washer Φ6x12	6	
10	C100B-3702000	Regulator	1	
11	C100B-3705010	Coil	1	
12	C100B-3705005	Ignition connecting pipe rubber (一)	1	
13	C100B-3705006	Ignition connecting pipe	1	
14	C100B-3705007	Ignition connecting pipe rubber (二)	1	
15	GB6177-86	Nut M6	2	
16	C100B-3819000	Relay component	1	
17	C100B-3819001	Boot	1	
18	C100B-3819010	Relay	1	
19	GB6170-86	Nut M6	4	



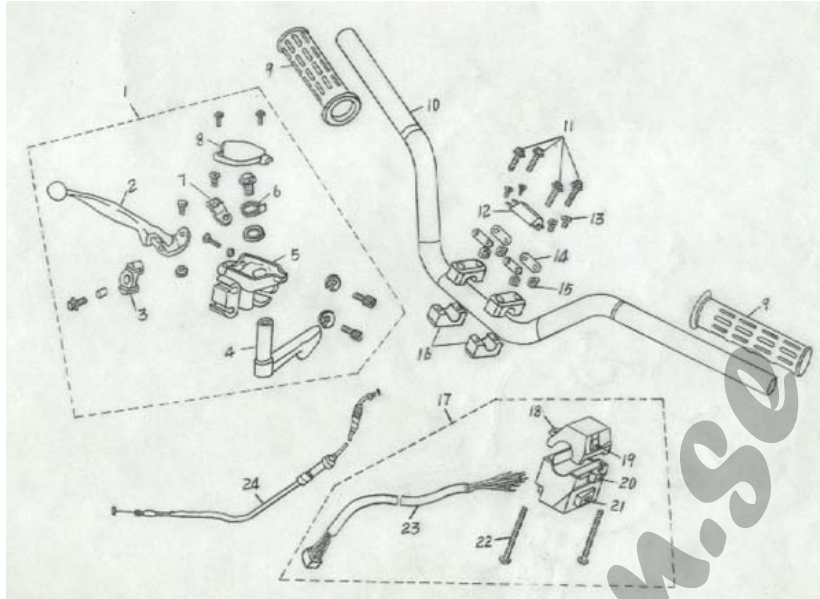
1	C100B-2801000	Frame component	1	
2	C100-2803000	Front bumper	1	
4	C100-2803011	Clip	2	
5	GB6177-86	Bolt M8x1.25	2	
6	GB5787-86	Bolt M8x1.25x16	6	
7	C100-2901100	Left front suspension arm bracket	1	
8	C100-2901201	Right front suspension arm bracket	1	
9	STNJZ006-0000	Front cushion	2	
10	GB5787-86	Bolt M10x1.25x38	4	
11	GB93-87	Washer Φ 10	10	
12	C100-2901107	Cushion bush 10x28x22	4	
13	GB5787-86	Bolt M10x1.25x80	2	
14	GB6177-86	Nut M10x1.25	2	
15	C100B-2817000	Front fender bracket	1	
16	GB5787-86	Bolt M6x12	2	
17	GB93-87	Washer Φ 6	2	
18	C100-2812000	Foot pedal main bracket	1	
19	C100-2815000	Right foot pedal bracket	1	
20	GB5787-86	Bolt M10x1.25x20	4	
21	C100-2814000	Left foot pedal bracket	1	
22	GB93-87	Washer Φ 8	4	
23	STNJZ007-0000	Rear cushion	1	
24	GB5789-86	Bolt M10x1x35	1	
25	GB5787-86	Bolt M10x1.25x45	1	
26	C100-2816000	Bracket end	1	
27	GB5787-86	Bolt M6x20	4	
28	C100-2816005	Rubber plug	2	
29	GB5787-86	Bolt M8x1.25x20	2	

30	GB97.1-85	Plain washer $\Phi 8$	2	
31	C100-2813000	lamp bracket	1	

PANDA 100/110



1	C100B-1101006	Fuel tank	1	
3	C100B-1101203	Gasket	1	
4	C100B-1101200	Fuel tank cover component	1	
5	C100B-1101002	Clip	5	
6	C100B-1101208	Air pipe $\Phi 4 \times \Phi 8 \times 320$	1	
7	GB5787-86	Bolt M6x32	2	
8	GB97.1-85	Plain washer $\Phi 6 \times \Phi 18 \times 1$	4	
9	GB97.1-85	Plain washer $\Phi 12 \times \Phi 24 \times 1$	2	
10	C100-1309002	Rubber gasket(二) - fuel tank	4	
11	C100-1309004	Rubber cover (二) - fuel tank	2	
11	C100-1309004	Rubber cover (二) - fuel tank	2	
12	GB5787-86	Bolt M6x32	2	
13	C100-1309001	Rubber gasket(一) - fuel tank	4	
14	C100-1309003	Rubber cover (一) - fuel tank	2	
15	C100B-1101003	Rubber hose $\Phi 4 \times \Phi 8 \times 195$	1	
16	C100B-1101010	Fuel switch	1	
24	GB5787-86	Bolt M6x12	4	
26	C100B-1109001	Air cleaner block	1	
27	C100B-1700004	Joint of inlet pipe(一)	1	
27	C100B-1700004	Joint of inlet pipe(一)	1	
28	C100B-1700006	Inlet pipe	1	
29	C100B-1700005	Joint of inlet pipe(二)	1	
30	C100B-1109002	Element	1	
32	C100B-1109004	Air cleaner cover	1	
33	GB845-85	Screw M5x15	1	
34	GB5787-86	Bolt M6x20	2	
35	GB97.1-85	Plain washer $\Phi 6$	2	
36	GB6172-86	Lock nut M6	2	
37	C100B-1700002	Inlet pipe clip	2	



SN	Code Name	Name	Quantity	Remark
1	C250-8301400	ACC. Switch unit	1	
2	C250-8301408	Handle bar	1	
3	C250-8301406	Handle cable fixing pad	1	
4	C250-8301407	Slot pull rod	1	
6		Slot pull rod return spring	1	
7	C250-8301402	Slot wire clip	1	
8	C250-8301401	Handle bar cap	1	
9	C250-8301003	Handle grip	2	
10	C100-3403000	Transission handler	1	
10	C100-3403000	Transission handler	1	
11	GB5787-86	Bolt M8x55	4	
12	C150B-1703000	Shutter control display	1	
12	C150B-1703000	Shutter control display	1	
13	GB6561-86	Screw M4X12	4	
14	C150B-8301009	Connecting plate of shutter control display	4	
15	GB6172-86	Nut M4	4	
16	C100-1200202	Handle bar fixing bracket	4	
17	C100B-3750000	Switch component	1	
18		Starting switch	1	
19		Stop switch	1	
20		Turn signal lamp switch	1	
21		Horn switch	1	
22		Screw	2	
23		Cable assy	1	
24	C100B-3504600	ACC. CABLE	1	